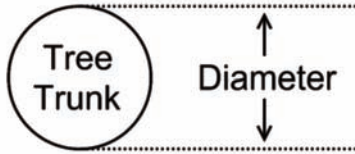


# Fall/Winter Tree Watering Schedule

**October - March**







Parker Water & Sanitation District  
 18100 E. Woodman Dr.  
 Parker, CO 80134  
[www.pwsd.org](http://www.pwsd.org)



Watering times in minutes, once or twice per month. Temperature and weather dependent (above 40 degrees, no snow cover)

## TRUNK DIAMETER

DEVICE	< 1"	1"	2"	4"	6"	8"	10"	12"	14"
 DEEP ROOT FORK (2 GPM)	2	5	10	20	30 MINUTES	40	50	60	70+
 DEEP ROOT NEEDLE (2 GPM)	2	5	10	20	30 MINUTES	40	50	60	70+
 SOFT SPRAY WAND (4 GPM)	1	3	5	10	15 MINUTES	20	25	30	35+
 SOAKER HOSE (2 GPM) (50 feet with restrictor)	2	5	10	20	30 MINUTES	40	50	60	70

\*Compiled by Craig Miller