

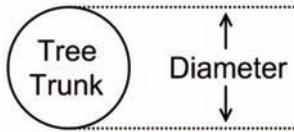
# Spring/Summer Tree Watering Schedule

## April - September



Parker Water & Sanitation District  
 18100 E. Woodman Dr.  
 Parker, CO 80134  
[www.pwsd.org](http://www.pwsd.org)

Hand watering schedule when lawn watering is limited, or for trees in non-turf areas



**DIAMETER**



DEEP ROOT FORK (2 GPM)



DEEP ROOT NEEDLE (2 GPM)



SOFT SPRAY WAND (4 GPM)



SOAKER HOSE (2 GPM)  
 (50 feet with restrictor)

SMALL TREES			MEDIUM TREES			LARGE TREES		
WEEKLY (10 gallons/inch)			3X PER MONTH (10 gallons/inch)			2X PER MONTH (15 gallons/inch)		
1"	2"	3"	4"	6"	8"	10"	12"	14"
5	10	15	20	30 MINUTES	40	75	90	105
5	10	15	20	30 MINUTES	40	75	90	105
3	5	8	10	15 MINUTES	20	38	45	53
5	10	15	20	30 MINUTES	40	75	90	105

\*Compiled by Craig Miller