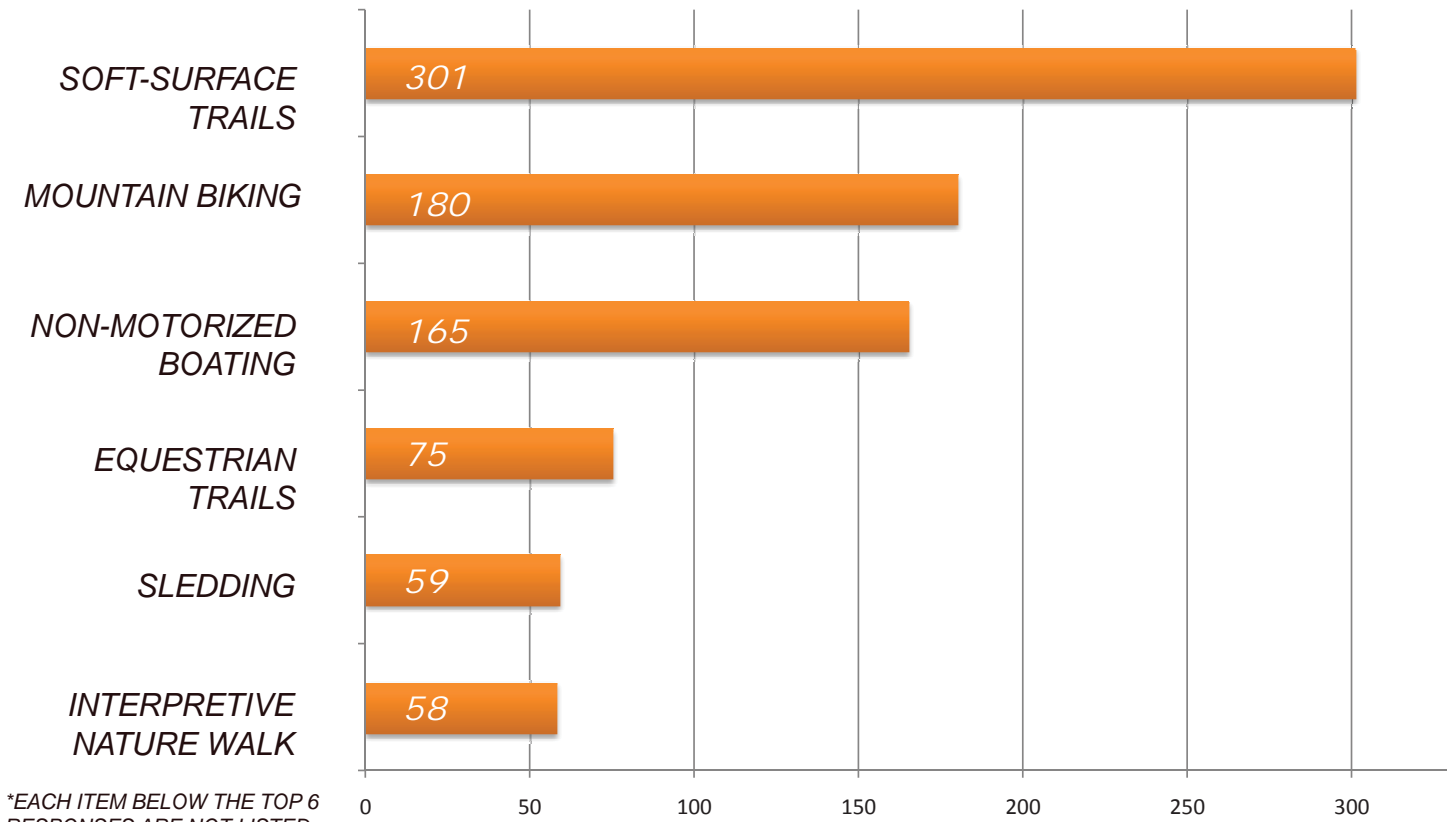


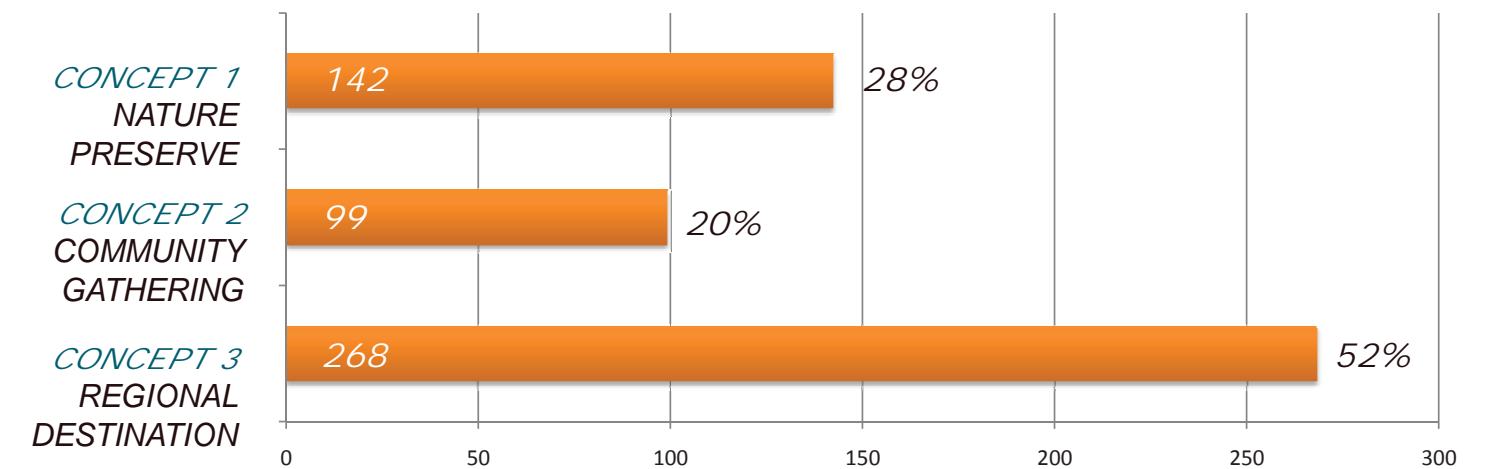
## QUESTION #1:

WHICH 3 ELEMENTS / ACTIVITIES CURRENTLY SHOWN ON THE CONCEPTS WOULD YOU USE THE MOST?



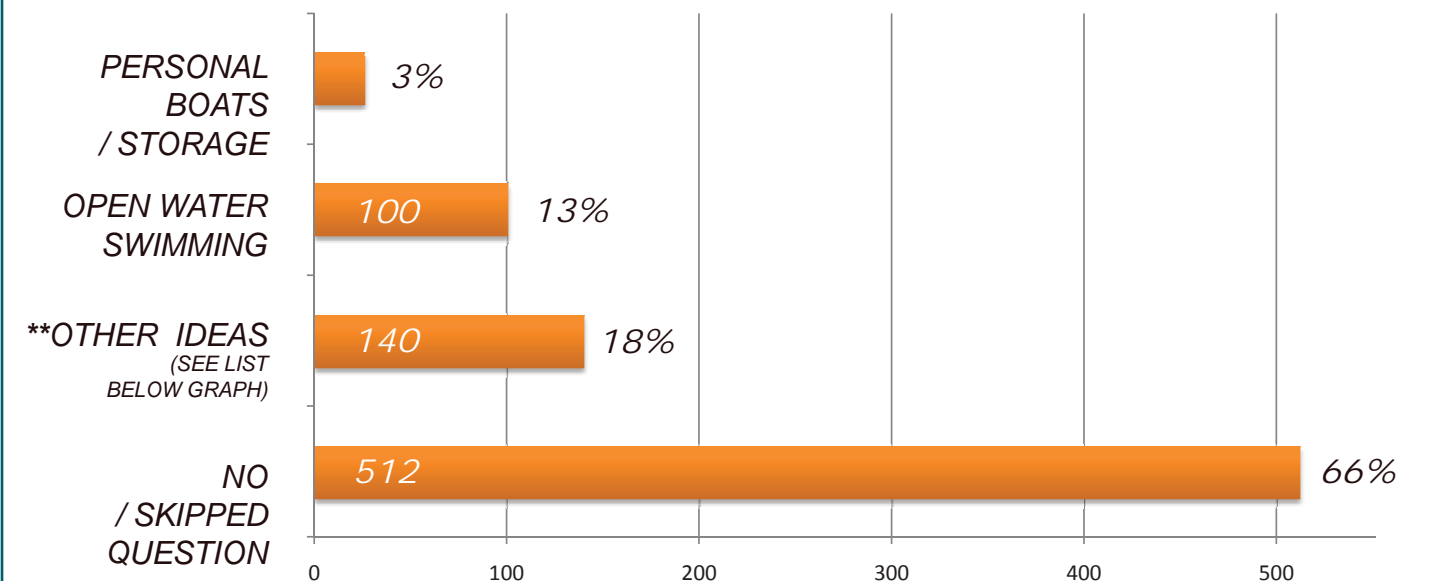
## QUESTION #2:

WHICH CONCEPT DO YOU PREFER?



## QUESTION #3:

IS THERE A PROGRAM ELEMENT THAT MEETS THE MISSION AND IS NOT SHOWN ON THE CONCEPTS, WHICH YOU WOULD LIKE TO HAVE INCLUDED?



\*\*OTHER IDEAS THAT MEET THE MISSION: (REFER GRAPH ABOVE: EACH ITEM REGISTERED LESS THAN 3% OF THE TOTAL RESPONSES TO THE QUESTION) PUBLIC ART, ASTRONOMICAL OBSERVATION AREA, ICE FISHING, HORSE CORRALS, BIRD BLIND (FOR BIRDING), ADA ACCESSIBLE RECREATION, & OUTDOOR COMMUNITY CLASSES.

\*\*OTHER IDEAS THAT DON'T MEET THE MISSION: SWIM BEACH, CAR / RV CAMPING, ATV AND PAVED TRAILS, BIKE SKILLS PARK, MOTORIZED BOATING, & MODEL AIRCRAFT ZONE.

## WE HEARD BACK FROM RESIDENTS FROM:

PARKER  
CASTLE ROCK  
CASTLE PINES  
LONE TREE  
CENTENNIAL  
FRANKTOWN  
HIGHLANDS RANCH  
ELIZABETH  
LITTLETON  
AURORA  
SEDALIA  
DENVER  
ARVADA  
WESTMINSTER

## OVERALL RESULTS

3,756 ROUND 1 SURVEY RESPONSES

778 ROUND 2 SURVEY RESPONSES

+ 300+ PUBLIC OPEN HOUSE ATTENDEES

= 4,534 TOTAL SURVEY RESPONSES

2,679 RUETER-HESS RESERVOIR RECREATION PLANNING EMAIL SUBSCRIBERS

## 1. WHY CAN'T I USE MY MOTORIZED BOAT OR SWIM IN THE RESERVOIR?

Rueter-Hess Reservoir (RHR) is unique to many other reservoirs in Colorado in that there is no moving body of water consistently running through the reservoir (e.g., a river). In contrast, water is pumped into RHR from various sources – and in turn, water is taken out of the reservoir for immediate processing through the Parker Water and Sanitation District's (PWSD or 'the District') water purification facility. Because of this, protecting the District's water quality from zebra mussels or invasive plant materials is essential. The RHR Recreation Authority and PWSD's boards agree that introducing water sport opportunities in a conservative/managed manner, with potential to grow in the future, will be the initial position. Motorized boats potentially introduce water quality challenges. **EXCEPTION:** Emergency, District testing and maintenance boats will be allowed only as needed.

## 2. HOW MANY MILES CAN YOU GO AROUND THE RESERVOIR?

The plan for 425 acre site north of Hess Rd. offers approximately 5.3 miles of trails for hikers, mountain bikers, horseback riders, cross-country skiers and snowshoers (when conditions allow). The plan for the property around the reservoir offers approximately 11.7 miles of trails for users (with the exception of horseback riders.) This provides a grand total of about 17 miles of trails for users to explore. A complete loop around the reservoir is 10 miles.

## 3. WILL THERE BE SHORELINE FISHING (BANK FISHING) ALL AROUND THE RESERVOIR?

In general, yes, with some limitations where fishing will not be feasible due to the natural terrain and possible safety hazard areas. Fishermen in boats and on foot will not be allowed near or on the dam as specified by the District.

## 4. WHY CAN'T I RIDE MY HORSE ALONG THE RESERVOIR?

These activities are options for the 425-acre area on the north side of Hess Road, but concentrated levels of animal waste near the reservoir potentially creates a water quality problem.

## 5. HOW BIG IS THE PROPERTY?

The minimum property available for public use is approximately 1,150 acres (1.8 square miles) at the reservoir's maximum capacity.

## 6. HOW LARGE IS THE RESERVOIR?

The dam rises 185 feet above the bedrock and the reservoir will encompass 1,170 acres, which is about one and half times the size of Cherry Creek Reservoir. At maximum capacity the reservoir holds 75,000 acre feet of water.

## 7. WHERE IS THE WATER COMING FROM?

The reservoir is being filled with return flows, Cherry Creek surface water and alluvial water rights. Water stored in the reservoir is treated through the Rueter-Hess Purification Facility before distribution.

## 8. WILL THERE BE A DOG PARK WITH A WATER AMENITY?

Initially, all dogs will be required to be on leash, due to water quality concerns. Other dog parks are available in the Douglas County area including the Glendale Open Space Dog Park located on S. Havana St. directly West of the Rueter-Hess Property. We would encourage you to take advantage of this and other local amenities.

## 9. WILL THERE BE A FEE ASSOCIATED WITH UTILIZING THE RESERVOIR?

Associated costing and fees will be discussed in detail in the next phase of the Master Planning process (early 2016 summer). Entrance Fees will likely be included to support recreational amenities and necessary staffing. A tiered pricing structure (based on residency) will be considered, as will longer term entrance passes. Rueter-Hess Reservoir is independent of the Colorado State Parks program.

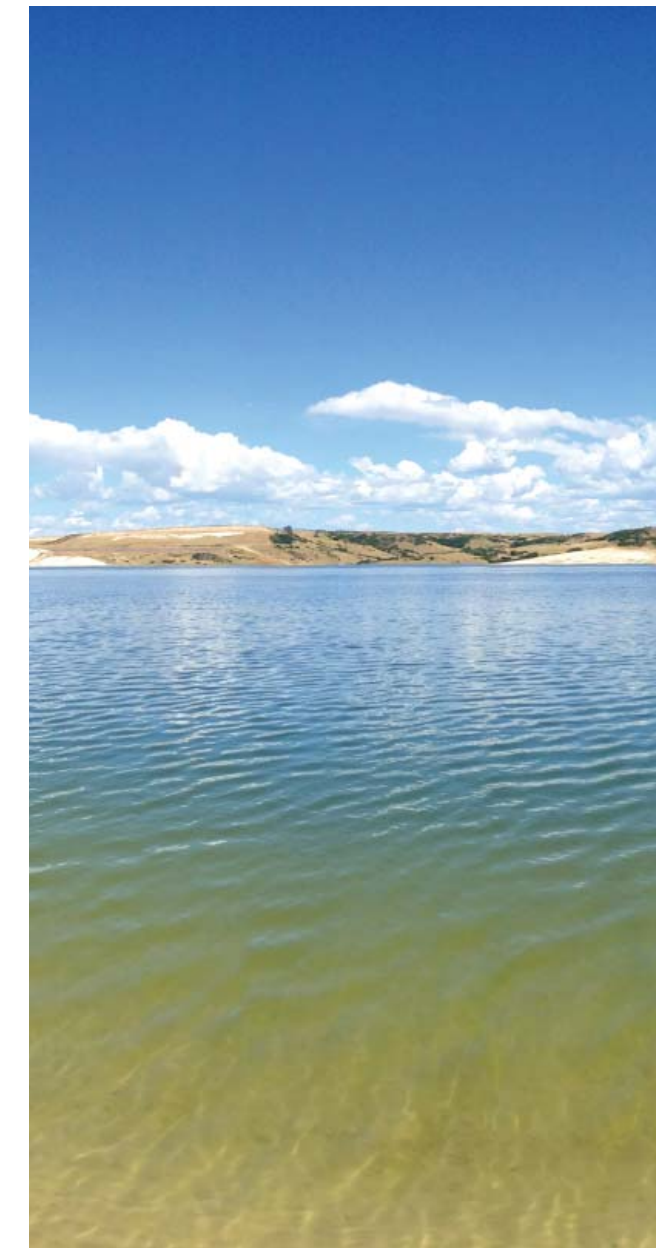
## 10. WHY ARE SOME PROGRAMS 'CONSIDERATIONS FOR THE FUTURE' AND NOT OTHERS?

Programs listed as 'Considerations for the Future' pose a greater threat to the reservoir's water quality and need further review before approval. As an example, until staffing needs for facilitating an open water swim and the use of personal watercraft are determined an alternative for recreating on the reservoir is under consideration. An immediate, cost effective solution to cleaning and inspecting personal watercraft has yet to be identified.

## WHAT ARE THE NEXT STEPS FOR RUETER-HESS?

The recreation Master Plan is scheduled for completion by the end of the 2016 summer, budget discussions in the fall of 2016 for possible 2017 construction.

Events, such as triathlons and other organized outdoor activities will be considered for 2017.



AREA A: MAIN ENTRANCE



BOAT LAUNCH



NON-MOTORIZED BOATING



WATER EXPLORATION PLAY AREA

AREA B: WATER TREATMENT PLANT



INCLINE CHALLENGE



SLEDDING HILL



ADA ACCESSIBLE INTERPRETIVE WALK

AREA C: HESS ROAD TRAILHEAD



EQUESTRIAN TRAILS



PICNIC AREAS



SCENIC OVERLOOKS

AREA D: BACKCOUNTRY



MOUNTAIN BIKING



WINTER SPORTS (WHEN CONDITIONS ALLOW)



BACKCOUNTRY CAMPING

# WE ASKED PARTICIPANTS TO INCLUDE ADDITIONAL FEEDBACK ... ... HERE'S WHAT THEY SAID.

APRIL 20TH, 2016

*"Let us use our own non-motorized watercraft. Don't make us rent."*

*"We are lacking water recreation sports and this is a great opportunity to bring non-motorized water activities to the young people and families in our community!"*

*"When can we volunteer to build trails?"*

*"It would be great to see lots of animal habitat incorporated... nest boxes, fallen logs in water, etc., with educational signs about various animal habitats for kids and adults to read all around the reservoir."*

*"I would love to see a Nature Center in Douglas County that focuses on wildlife, ecosystem, and conservation programming as this is something we currently lack as a county. Let me know if you need help, this idea should it make it into the plans."*

*"The smaller elements will always be best to preserve the integrity of the land and water. The more you offer in a small reservoir the more risk you place on the water."*

*"Equestrian trails would be SO awesome, but please take trailer parking into consideration."*

*"I love kayaking and hiking and have grandchildren, so it would be nice for all three."*

*"Please don't overbuild our open spaces!"*

*"The overall plan must support and educate about the importance of nature and conservation to our society."*

*"I am in favor of the least amount of development and amenities in order to have nature be the focal point."*

*"I care more about the amount of trails for mountain biking and hiking than other amenities. A full loop trail around the lake would be key."*

*"I'm very happy to see that the main concern is water quality."*

*"Don't try to be all things to all people. Keep it simple."*

*"Douglas County is known for its equestrian culture and heritage. Building on this only makes sense in keeping the area a fun, agricultural-based environment."*

*"Excited for the potential of this new outdoor asset!"*

